

Fórum de Intercâmbio Médico

日伯友好掛け橋協会
第2回フォーラム 日伯医療交流
Brasil - Japão
Miyagui Kenjinkai



DISCIPLINA DE
GASTROENTEROLOGIA
CLÍNICA



HOSPITAL SÍRIO-LIBANÊS



Integração Brasil Japão Quais os ensinamentos?

統合ブラジル日本
教訓は何ですか？

Cláudio L. Hashimoto



Gastroenterologia / Hepatologia / Endoscopia

胃腸病学 / 肝臓病学 / 内視鏡検査

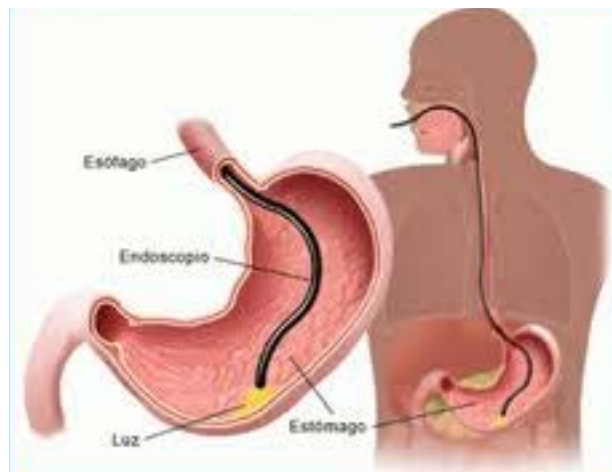


Gastroenterologia / Hepatologia / Endoscopia

胃腸病学 / 肝臓病学 / 内視鏡検査

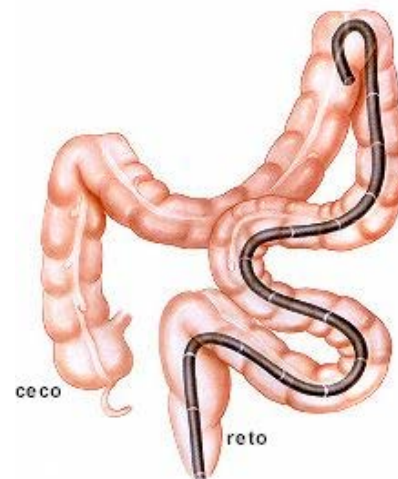
Endoscopia Digestiva Alta

内視鏡検査



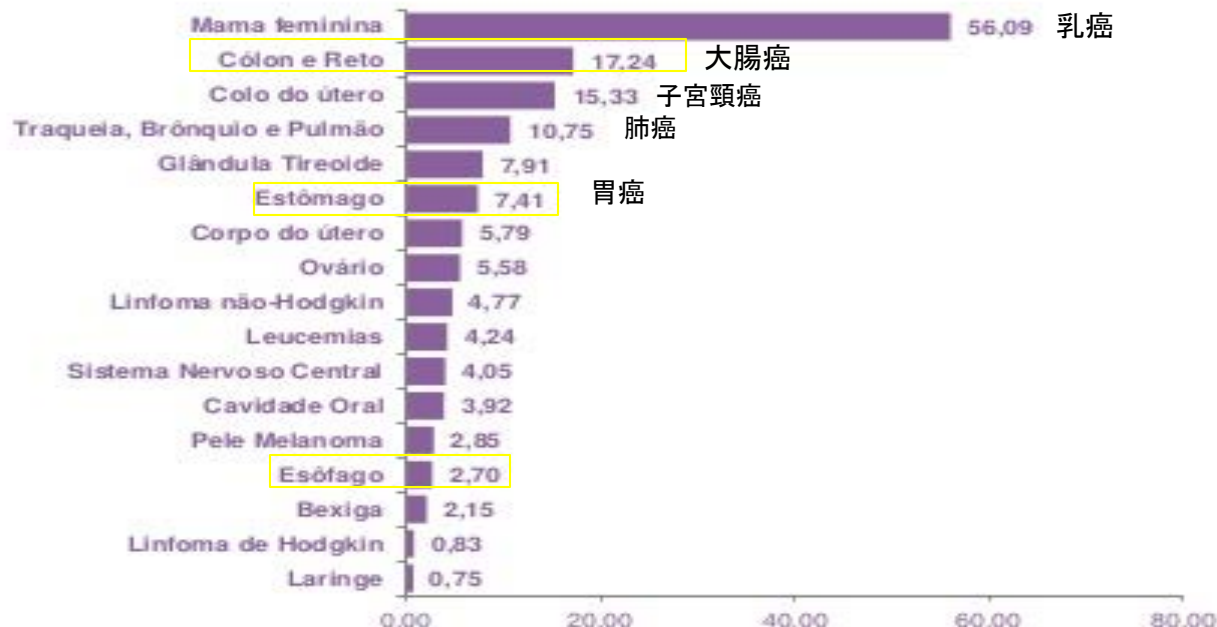
Colonoscopia

大腸内視鏡検査





Taxas brutas de incidência das localizações primárias estimadas para 2014, em mulheres, Brasil.*



* Exceto pele não melanoma



Taxas brutas de incidência das localizações primárias* estimadas para 2014, em homens, Brasil.

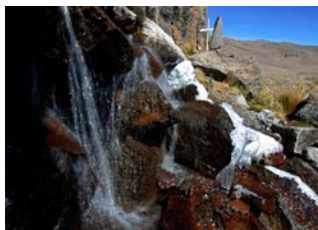


* Exceto pele não melanoma



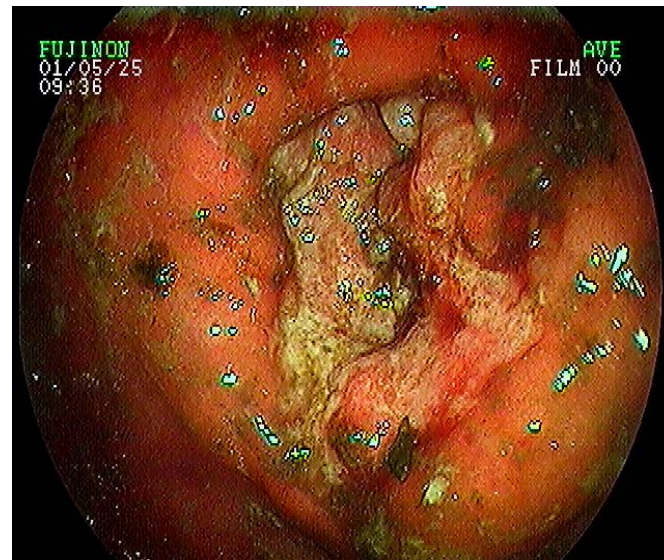
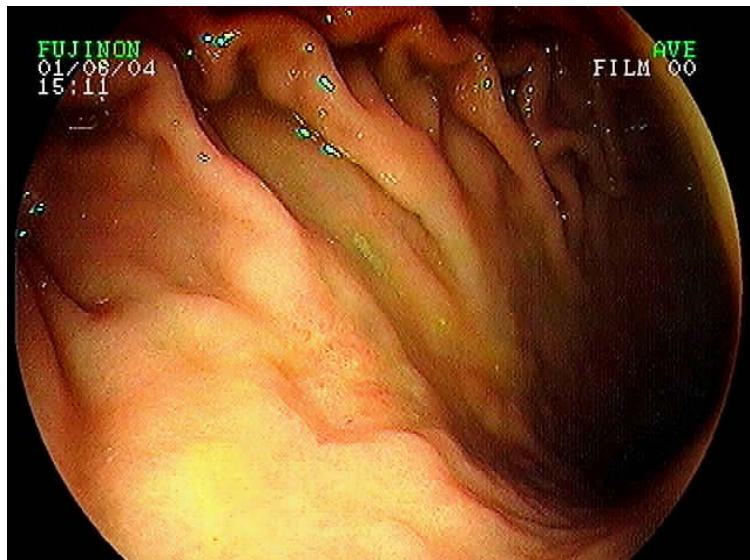
Câncer precoce | O que é?

早期癌



1º Legado | Câncer Precoce do Tubo Digestivo

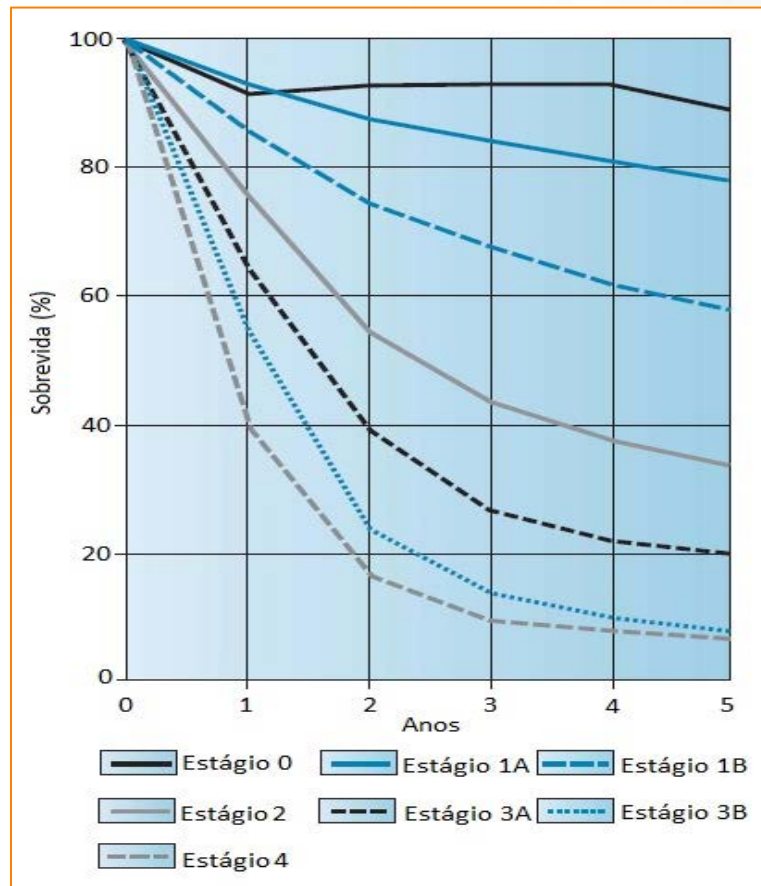
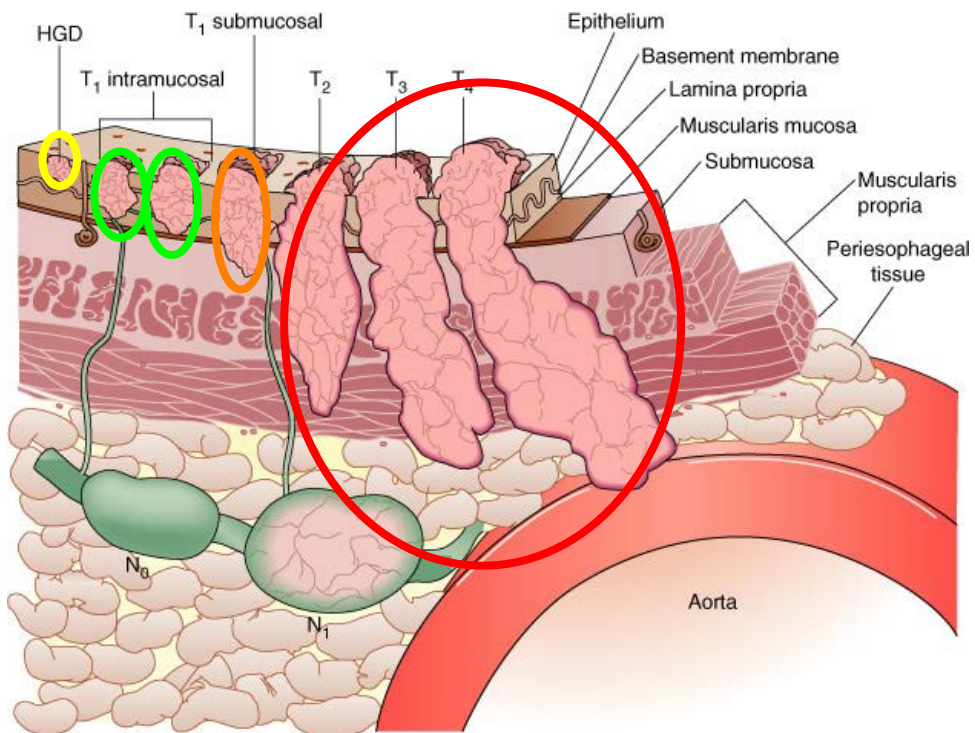
消化管の早期癌



Hashimoto CL, H Santa Cruz

Legado | Câncer Precoce 早期癌

→ Câncer curável 治愈癌



2º Legado | Câncer Precoce do Tubo Digestivo

早期癌

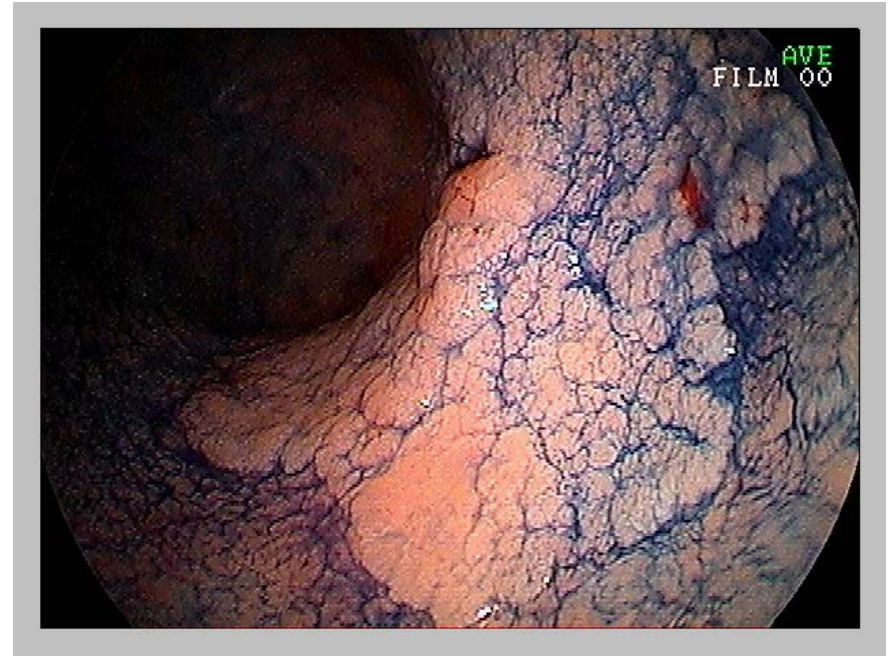
Como diagnosticar? 診断

1. Fatores de risco 危険因子
2. Check up 調べる
3. Aparelhos modernos 近代的な設備
4. Técnica de exame especial 特殊な検査法

Cromoendoscopia | Câncer de estômago 胃の早期癌

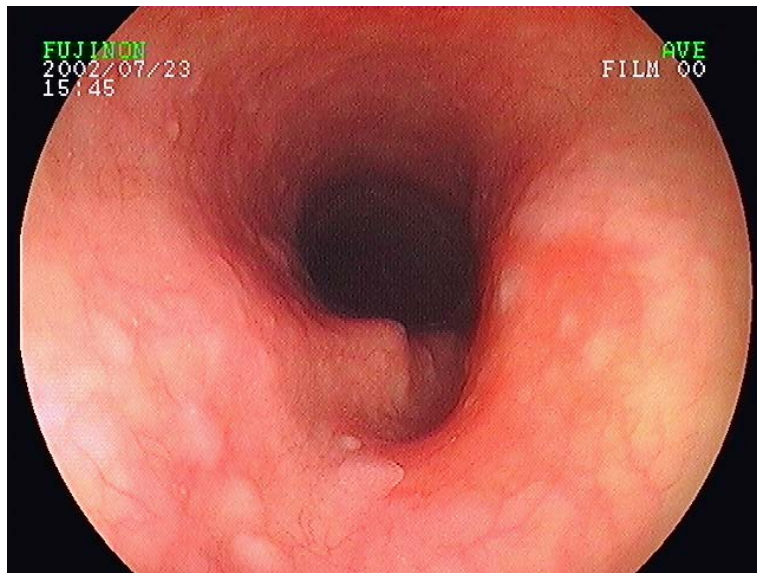


Visão comum

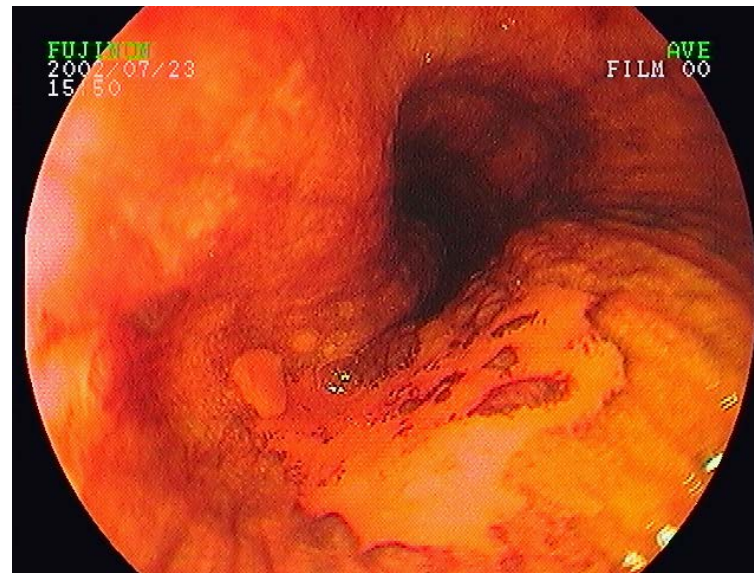


Corante 色素

Cromoendoscopia | Câncer de esôfago 早期食道癌

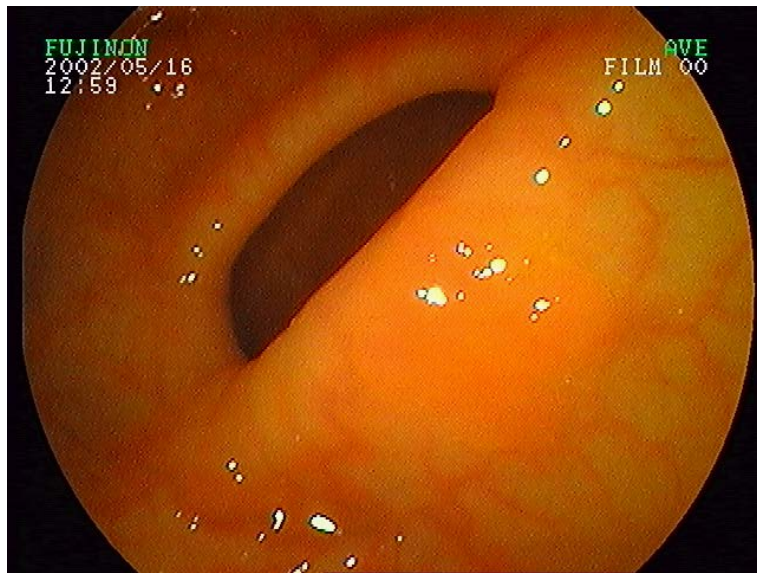


Visão comum

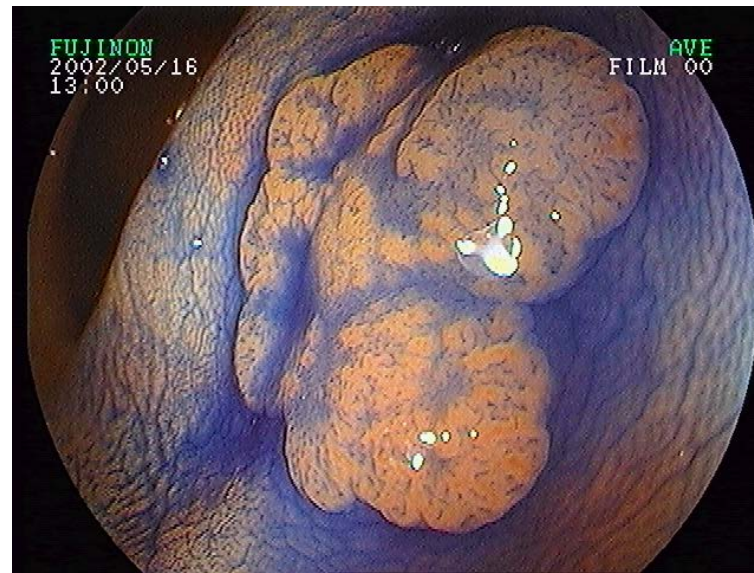


Corante 色素

Cromoendoscopia | Pólipo do intestino 大腸のポリープ



Visão comum



Corante 色素

OLYMPUS Your Vision, Our Future

FUJIFILM
Value from Innovation

PENTAX
MEDICAL

3º Legado | Câncer Precoce do Tubo Digestivo

早期癌

Como tratar? 治療法

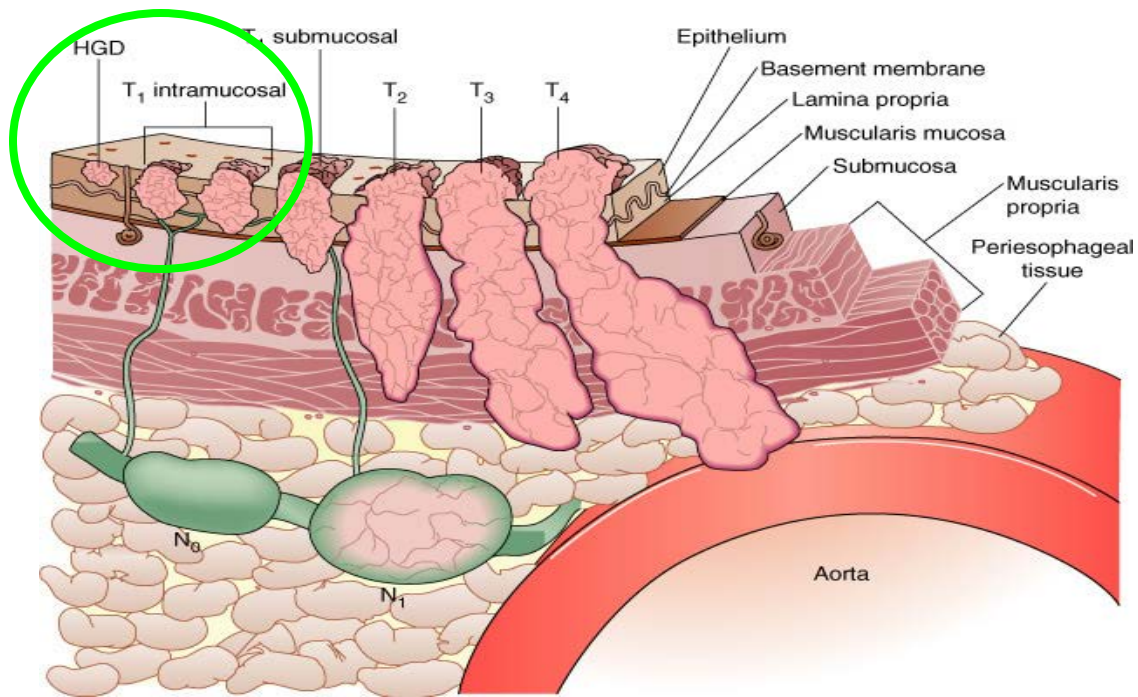
1. Cirurgia 手術
2. Quimioterapia 化学療法
3. Radioterapia 放射線治療

3º Legado | Câncer Precoce do Tubo Digestivo

早期癌

→ Casos selecionados podem ser tratados por endoscopia

選択されたケースは、内視鏡的に扱うことができます

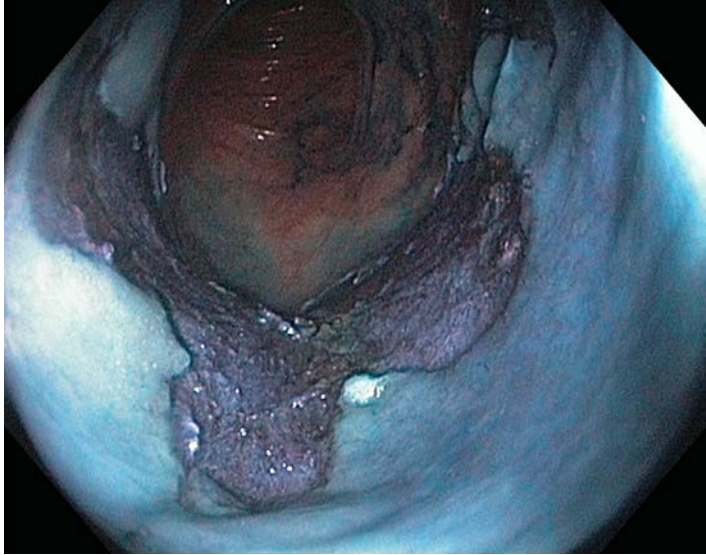


Atenção:

O especialista pode escolher o
melhor tratamento para a sua doença

警告: 専門家があなたの病気のために最善の治療を選択することができます

Hashimoto CL, HC FMUSP







Japan International Cooperation Agency



放射線被曝者医療国際協力推進協議会
Hiroshima International Council for Health Care
of the Radiation-Exposed